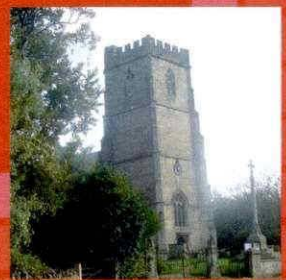
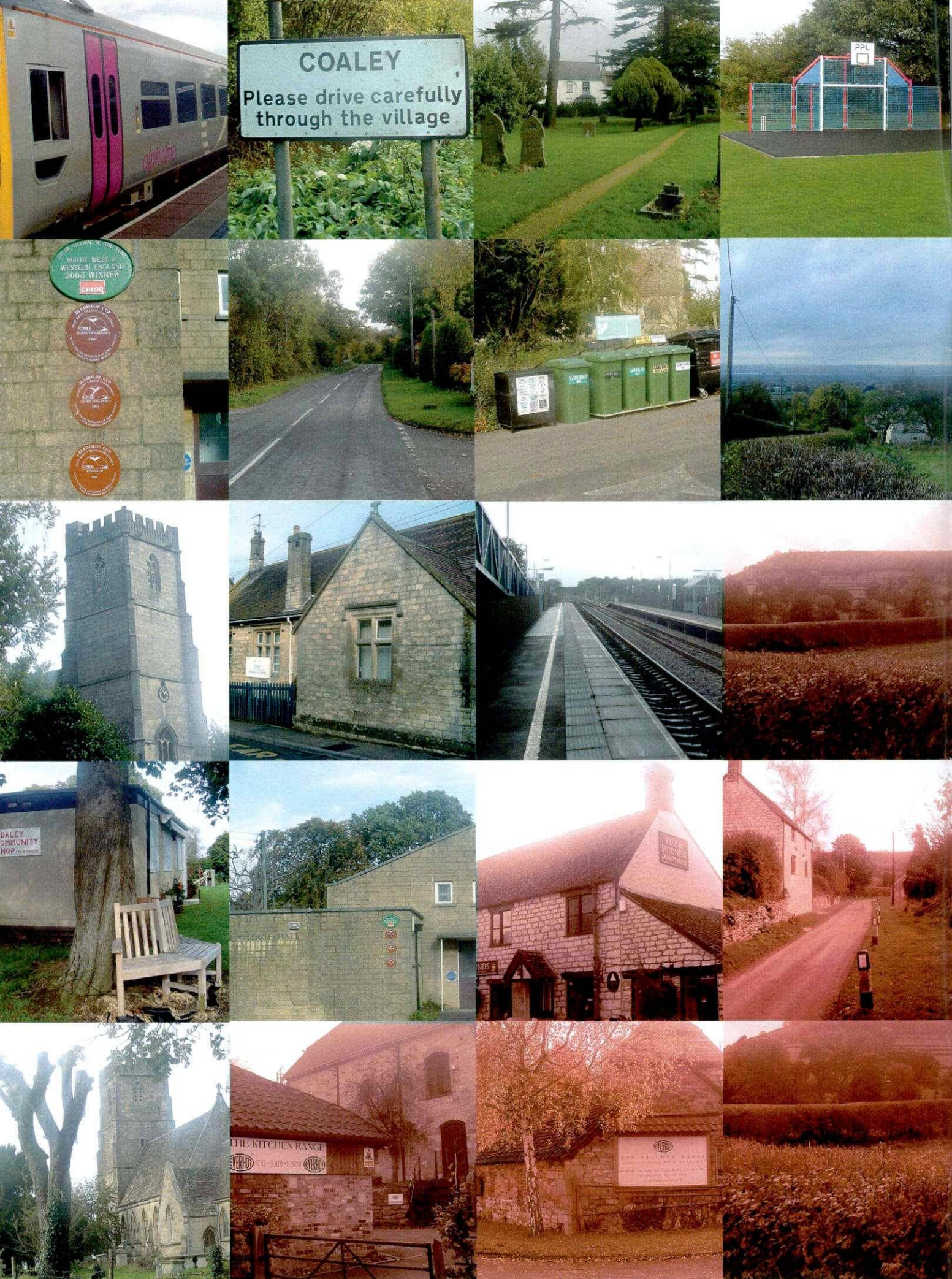


Coaley *Parish Plan*





Coaley Parish Plan, Issue 1, dated November 2005

Contents

1.	Introduction.....	4
2.	Executive Summary.....	5
3.	Recommendations and responses.....	6
4.	Action Plan	9
 Appendix 1		
	Survey analysis.....	10
 Appendix 2		
	Distribution & collection of Questionnaires	31



Introduction

The aim of the Coaley Parish Plan was to discover what the residents would like to happen in the parish over the next five to ten years.

In early December 2003, each household in the parish of Coaley received a questionnaire as part of the Parish Plan process. Seven days later the questionnaires were collected. There was an excellent response rate of 77%†.

A breakdown of the delivery and collection of questionnaires by ward, provided by the Parish Plan Committee, is given at Appendix 2.

It was important to ensure the maximum possible participation by all members of the Coaley Community when counselling village views on the range of issues considered.

The Parish Plan Committee therefore conducted the following:

- Regular one to two hour sessions with a total of 31 groups within the village.
- Surgery sessions in the village pub on a total of six evenings over eight weeks in the summer of 2003.
- A quantitative survey to assess accurately the strength of feeling in respect of issues raised during the qualitative sessions above.
- A detailed survey, produced with assistance from the Countryside Agency was hand-delivered to every home in the village.

Each home was offered the assistance of a 'ward officer' (each being responsible for approx. 30 houses) in completing the questionnaire if there were problems of literacy/understanding.

The questionnaires were fully analysed by GRCC researchers and the results discussed by the Parish Plan Committee. The survey results and analysis are provided in Appendix 1. The recommendations made by the Parish Plan Committee to Coaley Parish Council form the body of the Coaley Parish Plan and include the Action Plan for taking forward recommendations.

This Parish Plan should be considered to be a living document belonging to the community that will identify achievements and continue to plan for the future. An interim review will be performed late in 2007.

† There are 285 households in Coaley parish, all of whom received a questionnaire. 219 questionnaires were completed, giving a response rate of 77%.

Executive Summary

- Over three quarters of the households in Coaley completed a questionnaire.
- Two thirds of these households contain someone who has lived continuously in Coaley for over 10 years.
- Around 60% believe that the building of one or more starter homes would be acceptable in the village and just under 60% that smaller homes for downsizing families would be acceptable. Just under half think it would be acceptable if one or more sheltered homes for the elderly were built but only a fifth believe that detached executive style houses would be acceptable.
- Of those aged 16+ who work, just under a fifth do so from home. Around a third travel up to 10 miles each day and around half 10 miles or more. 86% of those who travel to work use their own car, 8% use a car share, 7% walk or cycle and 5% use public transport (mainly rail).
- Other than for work, around a quarter of the individual household members use the Cam & Dursley rail service, with fewer than 10% using the coach/bus or taxi services. Rail use is most common with 12-20 year olds and bus use with 12-15s. Looking at households as a whole, around a fifth use the rail service at least once a month, with smaller figures using coaches and taxis.
- Under a quarter of the households would support public transport if it was more integrated to the needs of their household. In a separate question, around 40% said nothing would persuade them to use public transport. Among those who did not tick this statement, the most common comments made concerned frequency. In addition, several commented on poor integration between the bus and rail timetables and a number said they would consider public transport if and when they were unable to drive due to age or ill health.
- Households who own two or more cars are over twice as common as those with only one. Four households do not have any cars (each contains a single person aged over 65). The average number of cars per household is 1.8, with an average of 1.04 car drivers per car.
- Speeding traffic was considered the biggest problem for pedestrians, with over half the households ticking this item. Inconsiderate/illegal parking was considered the biggest problem for drivers, with just fewer than half the households selecting the item.
- Just over a fifth believe that vandalism and antisocial behaviour are problems in their area, with under 10% indicating that drugs are a problem. When asked to specify any other crimes, 10% mentioned burglary or theft.
- 70% know who their Neighbourhood Watch Representative is, while a third use the NW Network.
- Over two thirds do not believe that a greater police presence has been provided since previous surveys. Just under a fifth make use of the mobile police station.
- Over 90% of the households use the kerbside recycling collection and two thirds the village hall recycling service.
- Over 80% use the footpaths/bridleways at least occasionally; over a third use them regularly. Of those who expressed an opinion on the footpaths/bridleways, around two thirds think they are well maintained, and just under two thirds that they are clearly marked.
- When asked about their willingness to use one or more of the renewable energy schemes listed in the questionnaire, half or more of the households said yes to each one (with similar figures for each).
- Over half considered that the village hall should be expanded and over a third would be prepared to help make it happen. The most popular of the facilities listed for incorporation into the village hall were a doctor's surgery (over 60%) and a re-housed village shop (over half). The other facilities received between about a fifth and a third of household "votes".
- Around a third of the individual household members belong to a club or organisation in Coaley and around the same proportion to one outside the parish (with some members falling into both categories). 12-15 year olds have the highest participation rate in Coaley (around 50%) with 21-30 year olds the least (under a fifth) – with the exception of 0-4 year olds – 0%.
- 28% of the households contain someone who is a member of the Coaley Shop & Post Office Association. This figure is around double that for the second and third most popular groups – the W.I. and Friends of Coaley Church. The most popular clubs or organisations outside Coaley are gyms/keep fit etc., skittles and sailing. Around 60% of those who attend clubs or organisations outside the parish would consider attending that club/organisation if it was available in Coaley.
- Just over half the households would be interested in lifelong learning. The most common subject was I.T./computers, which was mentioned by 39 households (just under a fifth). 10 of these households contain someone who is over 65 years old and an additional 14 contain a 51-65 year old. Other popular subjects were local history, languages and art.

Recommendations and Responses

The Parish Plan Group having considered the analysis from the questionnaires, have made recommendations on the following issues: housing, transport, crime, environment, village hall, leisure and education. the Parish Council have considered the recommendations and have formulated responses which form an action plan.

Housing in Coaley *Recommendations from the Parish Plan Group*

When it comes to housing, residents of Coaley are against large scale (more than 10-15 units) as well as large (multi-bedroom) “executive” type of housing. The overwhelming preference is for small, therefore relatively inexpensive housing suitable for occupation by younger couples and retirees currently living in Coaley and wishing to remain in the Parish by ‘downsizing.’

The Parish Plan Committee, whilst mindful of the limitations of influence on the process by the Coaley Parish Council (CPC), nevertheless recommend that CPC actively encourage the provision of new housing to follow along the lines set out in this and previous surveys.

Specifically, the committee recommend that CPC develop and publish, with urgency, a “preferred” housing planning policy for Coaley, and with the assistance of councillors at District level, bring this to the attention of planners and housing departments at Stroud District Council. CPC’s policy should also be brought to the attention of local developers.

In addition, CPC is recommended to lobby actively for the release of small pockets of land owned publicly or privately, for the kind of housing development needed within the Parish.

Parish Council response:

The Parish Council fully supports the aims but are, as mentioned, restricted. The Parish Council has no power to approve or refuse planning applications, it can only comment to SDC. Sites for development are restricted by the Stroud District Local Plan. The Parish Council however will develop a written policy to guide the Parish Council when considering planning applications. The policy will be based on the above recommendations. The planning department at SDC will be contacted to highlight the findings of the Parish Plan and the contents of the newly developed CPC planning policy. CPC will also seek assistance in producing a Village Design Statement that will form supplementary planning advice and be considered along with the Local Plan.



Transport, Roads and Lanes in Coaley

Recommendations from the Parish Plan Group

Private and Public Transport in Coaley, in terms of aiding movement by Parishioners and in its availability is not dissimilar to many other rural villages. Private transport is the preferred mode, used by most. This inevitably generates such issues as speeding and lack of passing facilities in the narrow lanes.

The Parish Plan Committee is of the opinion that the issues highlighted by the survey are so varied, that whatever action may be required is spread over so many enforcement and regulatory bodies, that what is required is not so much one or two specific remedies, but co-ordination of a variety of actions that would involve CPC, private transport providers and inevitably Coaley Parishioners themselves.

The Committee would recommend that CPC include in the Housing/Planning Policy the issues such as parking facilities with new housing and the possibility of land availability for communal parking.

CPC should also continue working with Highways Departments on a regular basis to apply for pavement repairs, install new passing places and lobby for these to be provided.

The Parish Plan Committee recognises that the people of Coaley have responsibilities, not only to act reasonably themselves, but also in monitoring behaviours. In particular, traffic speed restrictions, mode of parking, behaviour of pets are highlighted. CPC, with the aid of the Parish Newsletter, is doing a good job in reminding residents of their legal and civil rights and also of their responsibilities. The Parish Plan Committee recommends that CPC appoint or delegate specific jobs to volunteers to monitor and report to them on an ongoing basis.

Parish Council response:

Any new housing applications already have to satisfy Highways regulations regarding parking and visibility. CPC would seek to ensure that these considerations are fully met when considering applications, these issues will be incorporated within the CPC planning policy. CPC already appoint a Councillor as a representative for Highways issues who liaises with the Divisional Highways Officer to seek improvements wherever possible. Unfortunately budget constraints apply, but views are passed on and progress is monitored. CPC also make use of a speed radar gun and collect traffic speed data, at regular intervals, monitoring the scale of the problem. Rather than appointing individual monitors, CPC consider that involving all residents in monitoring and actively encouraging the reporting of incidents either to CPC or directly to the Police is the best course of action.

Crime and Crime Prevention

Recommendations from the Parish Plan Group

The Parish Plan Committee recognises that the wishes of the parishioners, as highlighted in the survey are, in the main, related to crime prevention. These include measures to remind would-be burglars/thieves that they are being watched/observed.

Having been highlighted in previous surveys, it is felt by a majority that a more visible presence of police in the village is still required. While it is not felt that the current visits by the 'mobile police station' fulfil the requirement, it is not recommended that it should cease visiting. However, it is recommended that a provision of more regular patrols be actively pursued.

It is felt that the recommendations outlined should, on the whole, be undertaken jointly by CPC, COSPA, and Coaley School, with due advice and assistance from the local Police. Further, it is recommended that a meeting is held as soon as reasonably practicable and prepare an action plan and arrangements to supervise its implementation.

Parish Council response:

CPC accept the Parish Plan recommendation for more visible Police patrols and will actively seek implementation. A Councillor is appointed to act as a representative on Police and Community Safety issues who regularly liaises with the local Police force. CPC would support a meeting as recommended with representatives from Coaley School. CPC will investigate initiatives to resolve the identified problems around the village hall and bus shelter.

Environmental Issues

Recommendations from the Parish Plan Group

The survey indicates a very high usage of the existing recycling facilities provided. It also shows that there is a desire for these facilities to be extended, particularly such as cardboard and polythene packaging.

The Parish Plan Committee recommends that usage of recycling is monitored regularly. It is proposed that CPC investigates, together with Stroud District Council and Coaley School the potential extensions of the service to include items not currently recycled.

On the question of footpaths, The Parish Plan Committee recommend the publication of an up to date Parish footpath map and appoint a volunteer warden to whom residents and footpath users can report such matters as quality and possible improvement of stiles, obstructions and other related issues.

Parish Council response:

CPC agree with all the recommendations made. CPC appoint two Councillors who are responsible for footpaths and public rights of way issues.

Village Hall

Recommendations from the Parish Plan Group

The fact that the village hall represents a vital role in the life of Coaley was reflected in the responses to the survey. The committee also noted the wishes of almost half the respondents who expressed the wish that the Village Hall ought to offer additional facilities, as well as integrating the existing, but free-standing, Village Shop into the Hall complex. The additional facilities indicated are much varied. Therefore, the Parish Plan Committee is of the view that not every item on the "wish-list" is practical.

The Parish Plan Committee also recognises that the Village Hall and its use is regulated by the rules of a Foundation (now a charity) set out during the early 1950's, currently governed by the Charities Commission. Furthermore, the existing hall complex is currently in need of urgent repair and alterations in order to comply with regulations relating to provision of facilities for the disabled.

The Parish Plan Committee has had extensive consultations with the Village Hall Management Committee and jointly, two options were looked at.

Option 1

Carry out urgent repairs to ensure that the present building does not fall into further and more serious disrepair. This process also to include the provision of facilities for the disabled, required by Act of Parliament

Recommendations and Responses

Option 2

Combine the above work with a much larger scheme that would involve extensive and radical addition(s) or alteration(s), so that some of the facilities indicated as being desirable in the survey, including the merging of the Village Shop into the complex, can be achieved.

Two very important issues emerged from these options:

- Both will require large sums of money. Tens of thousands of pounds with Option 1 and hundreds of thousands with Option 2.
- The amount of disruption to the everyday life/use of the Hall whilst the work is being carried out. This committee, having deliberated these issues together with the Village Hall Management Committee, consider Option 1 to be inevitable and ought to be undertaken as soon as practicable.

The kind of finance required for Option 2 cannot be raised overnight. To this end the Committee recommend that, while Option 1 is in progress, that Village Hall Management Committee together with Coaley Parish Council, the Parish Plan Committee and others as required, convene a meeting to form a properly constituted body (A Project Management Group) with the aim of working towards the following:

- Investigate the legal issues that presently govern the use of the hall to ensure that the additional facilities and features to be incorporated are permitted.
- Agree on the kind/extent of the building itself that will be capable of integrating the Village Shop and providing other facilities.
- Agree on a timetable for the erection of a new, or rebuilding of the existing, to create a considerably larger Village Hall - perhaps 3 to 5 years from now.

Finally, the Committee acknowledges the strength of the wish of Coaley parishioners for better and/or more extensive facilities in the Village Hall. At the same time, it feels that some degree of self-help by the parishioners is also called for. It also recommends that these professionals and trades people living and working in the parish consider offering their services, either free or at minimal cost, as and when the scheme is up and running.

Parish Council response:

CPC agree with the recommendations and will actively support any Village Hall Committee led initiatives.

Leisure

Recommendations from the Parish Plan Group

There are plenty of clubs/groups that provide sporting, cultural and general specialist subject activities. These are, by and large, volunteer run and are reasonably well supported. However, there are some 34% of the households that do not participate in any of the activities on offer.

During the consultation period, it was emphasised to the Committee that there was a need for more effort to encourage current and new residents of the parish to join the existing organisations. The Committee therefore would recommend the following:

- The Parish newsletter to feature a specific club/group with each issue and invite new members.
- Coaley Parish Council to develop a "Welcome Pack" for newcomers with details of existing clubs/groups with contact names/telephone numbers, based on the information currently provided by the Women's Institute's 'Welcome to Coaley' leaflet.
- Encourage like minded groups to form new clubs/groups.

Parish Council response:

The Parish newsletter already features many of the clubs in the village with updates when required. The W.I. already produces a 'welcome pack' for newcomers to the village. A list of club points of contact will be made available at the Community Shop.

CPC suggest that clubs have to be driven by a mutual interest of a group of residents and so can not be planned or mandated in advance. CPC will continue in its support of local leisure groups/clubs.

Education and Learning

Recommendations from the Parish Plan Group

The survey points to a positive interest in lifelong learning. The committee recognises that while there is interest, identifying those areas of learning most favoured and who is most capable of designing and establishing pilot schemes will not be easy.

Despite these difficulties, the Committee will suggest that the Coaley Parish Council and the Governors of Coaley School convene an open meeting to discuss the issue and thus gauge the level and nature of interest.

Parish Council response:

CPC consider that life long learning opportunities, driven by those who have an interest, could use the Village Hall as a venue.

Coaley Parish Plan – Action Plan

Housing in Coaley

UPDATE	ACTION PLAN	TIMESCALE
<ul style="list-style-type: none"> Two affordable housing units completed in Trenley Road 	<ul style="list-style-type: none"> CPC will develop a planning policy in line with survey findings to guide councillors when reviewing planning applications 	June 2006
	<ul style="list-style-type: none"> SDC Planning Department to be made aware of planning policy 	July 2006
	<ul style="list-style-type: none"> CPC will produce a Village Design Statement with advice from SDC Planning Department for use by both CPC and SDC when considering applications for new development 	Dec 2006

Transport, Roads and Lanes

UPDATE	ACTION PLAN	TIMESCALE
<ul style="list-style-type: none"> Pavements have been renewed at Far Green, Hamshill and from Westend up to Coaley School Re-surfacing has taken place on Elmcote Lane, Pinnells End Lane, Field Lane and Corner Lane The Rail Link bus currently operating is providing a better service for Coaley residents wishing to travel to Dursley. 30mph speed limit in the village 	<ul style="list-style-type: none"> Weight limit on Peak Lane actively being sought 	Ongoing
	<ul style="list-style-type: none"> Speed gun checks carried out at regular intervals by CPC 	Ongoing
	<ul style="list-style-type: none"> CPC will encourage residents to actively monitor and report incidents to the Council or the Police 	Ongoing

Crime and Crime Prevention

UPDATE	ACTION PLAN	TIMESCALE
	<ul style="list-style-type: none"> CPC to liaise Coaley School to determine level of crime prevention education undertaken 	Ongoing
	<ul style="list-style-type: none"> Discuss with Neighbourhood Watch representatives possibility of additional signage around the village 	March 2006

Environmental issues

UPDATE	ACTION PLAN	TIMESCALE
	<ul style="list-style-type: none"> Investigate the possibility of extending current recycling within the village 	Ongoing
	<ul style="list-style-type: none"> Publish parish footpaths map 	Sept 2006
	<ul style="list-style-type: none"> Encourage volunteer footpath wardens to come forward via newsletter article 	June 2006
	<ul style="list-style-type: none"> Determine whether demand would warrant a bulk buy of Water Butts from the district council for onward sale to residents 	March 2006

Village Hall

UPDATE	ACTION PLAN	TIMESCALE
<ul style="list-style-type: none"> Kitchen and annexe refurbished Fence erected by Village Hall Committee to discourage ball games causing damage Installation of a toilet for the disabled and refurbishment of the Ladies toilets Horse Chestnut trees pollarded 	<ul style="list-style-type: none"> Create a Project Management Group to take forward the Option 2 recommendations contained in this plan 	March 2006
	<ul style="list-style-type: none"> Produce a detailed Project Management Plan for the planned changes 	Sept 2006

Leisure, Education & Learning

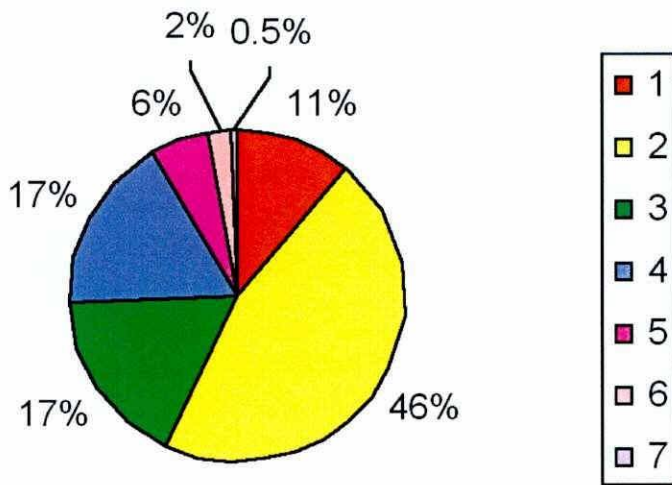
UPDATE	ACTION PLAN	TIMESCALE
<ul style="list-style-type: none"> New Tai Kwondo club started Guide Unit set up in 2004 Facilities have been installed by the Coaley Community Action Group on the Recreation Field for young people (12 to 20 age group) incorporating a Multi Activity Wall and Seating Pod 	<ul style="list-style-type: none"> List of club points of contact to be made available at the Community Shop 	Dec 2005
	<ul style="list-style-type: none"> Periodic articles to appear in the newsletter featuring village clubs/groups 	Ongoing

Appendix 1

1. Age of your household members

The results show that in the 219 households who completed a questionnaire, there are a total of 589 people, giving an average of 2.7 people per household. This is the same to one decimal place as the parish average. As Chart 1 shows, 2-person households are the most common.

Chart 1. Number of people per household



Charts 2 and 3 show the breakdown of the 589 people by age group. Chart 2 displays the nine age bands given in the questionnaire while Chart 3 condenses these into four bands, e.g. 47% of the 589 people are aged over 50.

Not apparent from the charts is that 37% of the households contain at least one person aged over 65 and 23% contain at least one child aged 0-15. 23% of the households contain only people aged over 65.

Chart 2. Age groups as in questionnaire

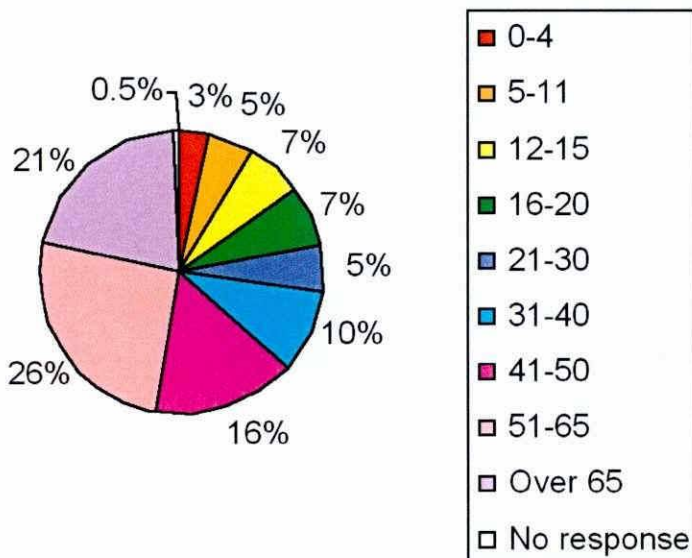
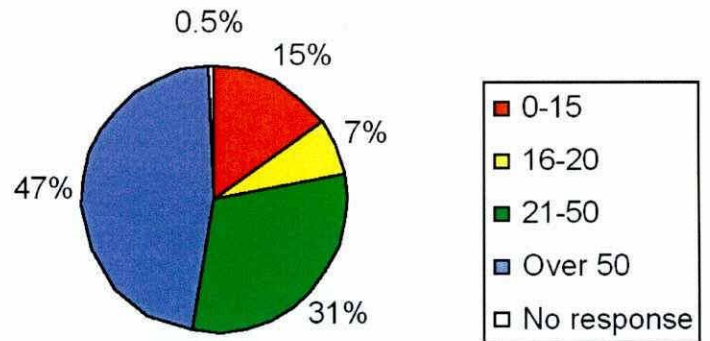


Chart 3. Combined age groups

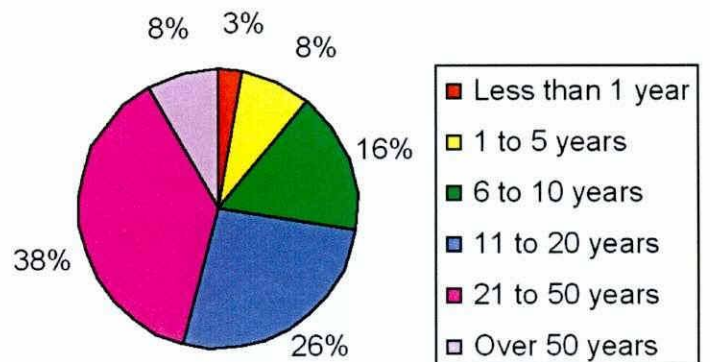


1a. Experience of living in Coaley / 1b. Continuity of living in Coaley

In your household, what is the longest that anyone currently living there has lived in Coaley? Has the person in 1a lived in Coaley continuously for this period of time, or have they left and returned?

The chart below shows that 72% of the households contain at least one person who has lived in Coaley for over 10 years. 6 households (3%) have lived in the parish for less than a year.

The vast majority (93%) of the people referred to in the chart have lived in Coaley continuously over the period of time indicated. Two thirds of the households contain at least one person who has lived in Coaley continuously for over 10 years.



1c. Home ownership

With regard to your own home, do you ...

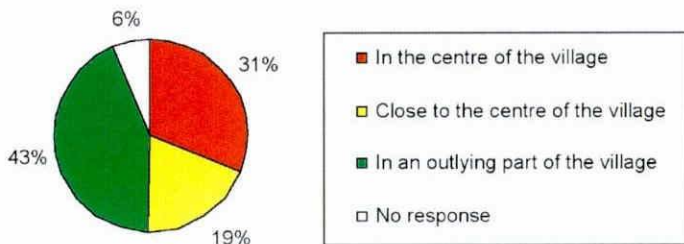
90% own their own home. 2% (5 households) rent privately and 7% (15 households) rent through the council or a housing association.

	Percentage of households	Number of households
Own it	90%	198
Rent it privately	2%	5
Rent it through Housing Association/Council	7%	15
No response	0.5%	1

1d. The location of your home

Would you describe the location of your home as being ...

50% of the households live in, or close to, the centre of the village, while 43% live in an outlying part.



1e. Need for new homes in Coaley

Various considerations have identified that new homes should be built in Coaley. In the opinion of your household, please rank the following in terms of importance to the village (1=highest, 4=lowest) and indicate HOW MANY new homes of that sort would you consider as acceptable to be built in the village? (As a guide, The Close contains about 45 homes.) *Note: If you disagree with any type of new housing being built in the village please put a zero in the box for “Number of new homes acceptable” for that category.

Chart 1 below shows the importance ratings given by respondents, where, as detailed above, 1=highest and 4=lowest importance. In any situation where a respondent wrote “0” for number of homes acceptable, this answer has been used in Chart 1 rather than their importance rating (see note above*). It is clear from the chart that starter homes would be the most acceptable and that most respondents did not show much enthusiasm for detached executive style homes. (N.B. Many households used the same importance rating more than once and many did not write a number alongside all the options.)

Chart 1. Importance ratings

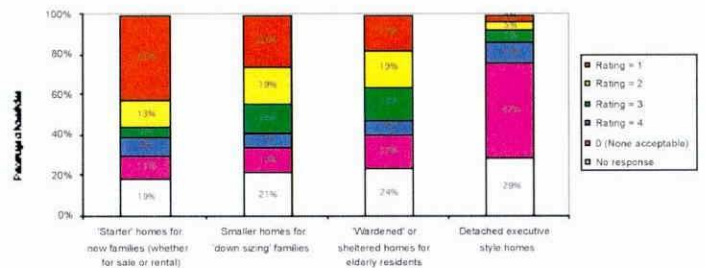
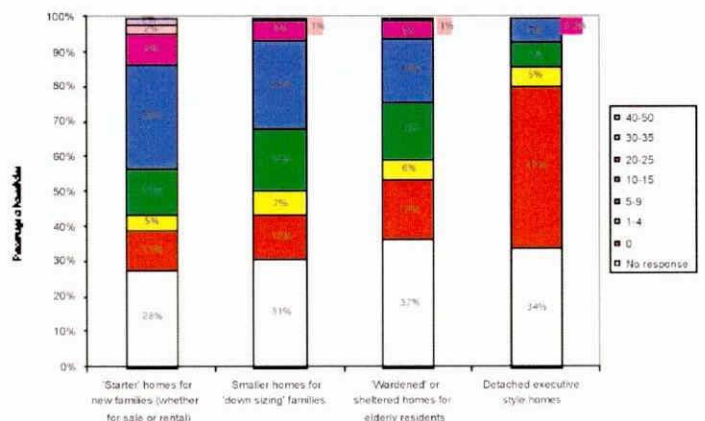


Chart 2 shows the number of homes thought acceptable. The answers have been grouped into bands. In total, 61% indicated that one or more starter homes would be acceptable. The figures for the other property types are: 57% for smaller homes for downsizing families, 46% for wardened/sheltered homes and 20% for detached executive style homes.

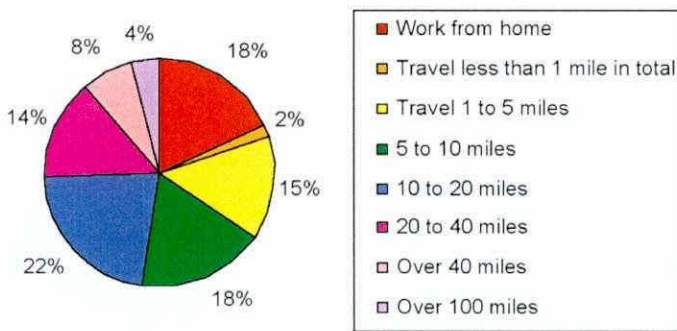
Chart 2. Number of homes acceptable



2a. Travel to your employment (if applicable)

If any members of your household work, how far do they travel in total each day, just to and from their employment base?

71% of the respondents aged 16-65 answered this question, as well as 9% of those over 65. The results are given in the chart below. The percentages are based only on those who answered the question, i.e. on those aged 16+ who gave details of their journey to work. The pie chart shows a fairly even distribution of answers over the options given in the question, with the exception of "Travel less than 1 mile in total" (5 people) and "Over 100 miles" (10 people). 18% – almost a fifth – work from home.



(N.B. In a few cases, respondents ticked two mileage bands rather than one. In these cases, each of the two answers was counted as "half a person" when summing the total number of people who ticked each option.)

2b. Mode of travel to your employment (if applicable)

How do any members of your household, who are in employment, travel to their employment base?

The percentages in the table below are based only on those who travel to their employment, i.e. those who answered 2a above, except for those who work from home.

The first part of the table below shows that 86% travel using their own car, while fewer than 10% use any other mode of travel. A few respondents ticked more than one item, e.g. "Own car" and "Rail" so the figures add to more than 100%. In the second part of the table, the answers of those who ticked "Own car" have been excluded, reducing the percentages for the alternative modes of travel to 7% for car share, 4% for cycling/walking and 2% for public transport (rail or bus/coach), because some of those who ticked these options also ticked "Own car". In other words, the second part of the table only involves respondents who do not use their own car at all when travelling to employment.

	All answers		"Own car" excluded	
	Percentage of people	Number of people	Percentage of people	Number of people
Own car	86%	195	-	-
Car share	8%	18	7%	15
Cycle	4%	9	2%	5
Walk	3%	6	2%	5
Rail	4%	8	1%	3
Coach/Bus service	1%	2	1%	2
Other*	3%	7	3%	6

*Other: Motorbike x 2; Van x 2; Works van; Taxi; Hitch.

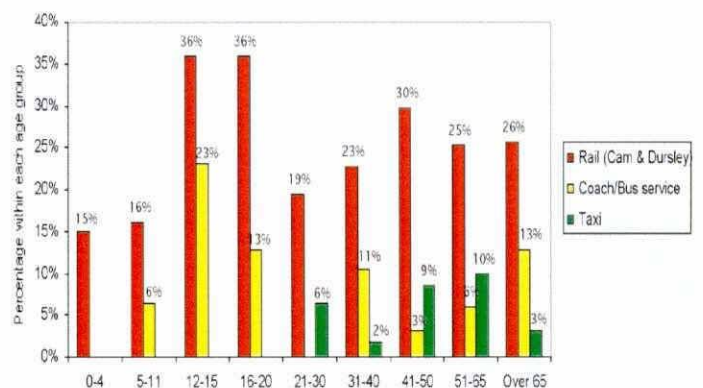
2c. Use of public transport, other than for work

Do members of your household ever use the current public transport links that service the village, other than for work?

Over a quarter of the 589 people in the households who responded to the survey use the Cam & Dursley rail service, 8% use the coach/bus service and 5% use taxis.

	Percentage of 589 people	Number of people
Rail (Cam & Dursley)	26%	153
Coach/bus service	8%	50
Taxi	5%	30

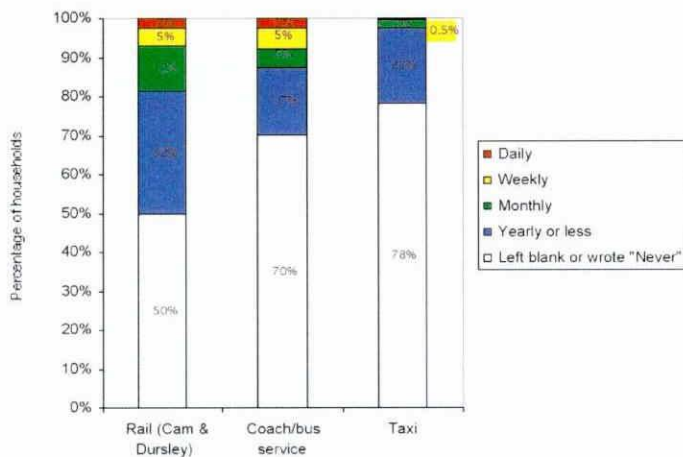
The chart below shows the variation by age, for example 36% of 12-15 and 16-20 year olds use the rail service, 23% of 12-15 year olds use the coach/bus service, and taxi use is most common with 41-65 year olds.



2d. Frequency of travel on public transport

Taking your household as a whole, how often does anyone use the available public transport?

The chart below shows displays the results for this question. Combining the first three figures in each column, 19% use the rail service at least monthly, 12% the coach/bus service and 2.5% a taxi. The actual numbers involved are shown in the table below the chart.

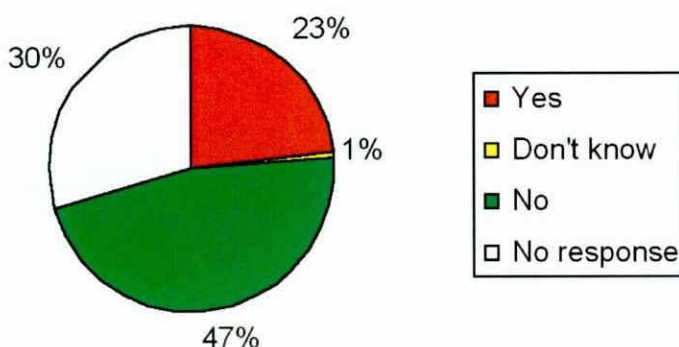


	Number of households		
	Daily	Weekly	Monthly
Rail (Cam & Dursley)	5	10	26
Coach/bus service	5	12	11
Taxi	0	1	4

2e. Transport in the future

If public transport was more integrated to the needs of your household (for example by being able to use a responsive 'ring & ride' service to suit YOU), would members of your household support it, accepting any inconveniences associated with such a service (e.g. having to book ahead of time, waiting, having to make other connections etc.)?

23% of the 589 household members ticked Yes, with a further 1% people writing "Don't know". Most ticked "No" or did not respond.



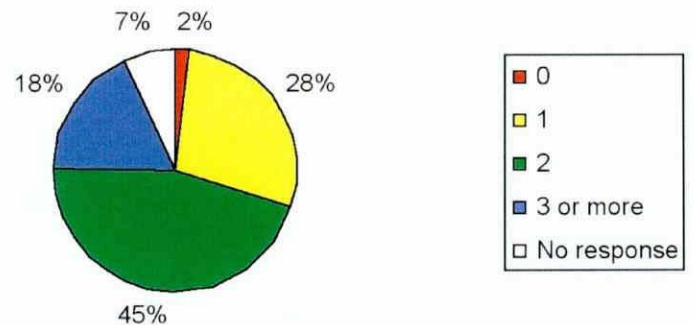
A couple of people made comments:

- Presently no – but later perhaps.
- If the service did what they said they did in the timetable it would help (they don't collect, they don't do the routes they say they do). Let down 3 times, will never use again (one was an important interview).

2f. Number of cars

How many cars does your household have?

4 households indicated that they do not have any cars. These four households contain one person only, and in each case this person is aged over 65. The number of households with more than one car is over twice the number of households with just one car. There are a total of 393 cars among the 219 households who returned a survey, giving an average of 1.8 cars per household.

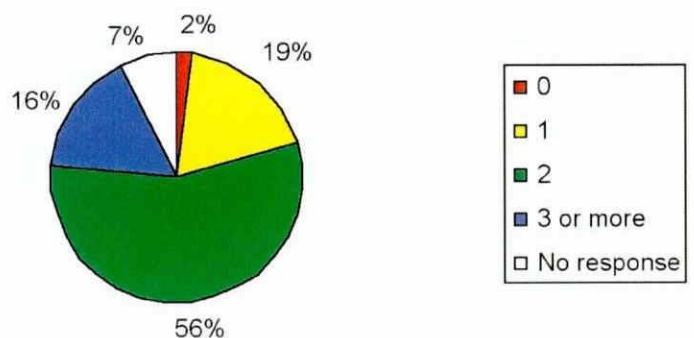


(N.B. 13 of the 15 households who did not respond to this question did not answer any of the questions on the double page spread of pages 2-3 in the questionnaire; it was as though they turned too many pages at once. The two households who did not respond to this question but who did answer some of the other questions on pages 2-3 each contained over 65 year olds only, one of the households containing one person and the other containing two. It may be that these two households do not have any cars, bringing the percentage of 0 car households to 3%.)

2g. Number of car drivers

How many car drivers are there in your household?

There are 409 car drivers among the 219 households. There are an average of 1.9 car drivers per household and an average of 1.04 car drivers per car (or 0.96 cars per car driver).



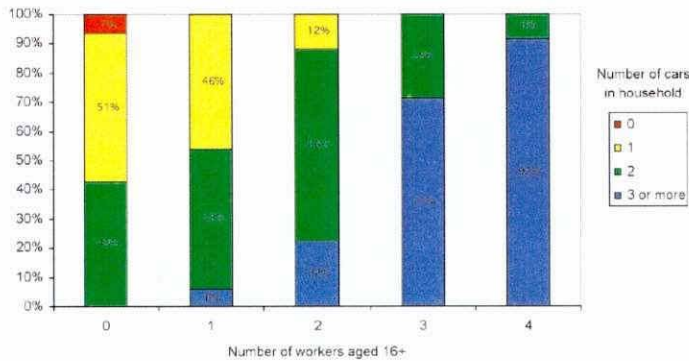
Two cross-tabulations regarding number of cars owned by households

(Requested by Parish Plan Group)

N.B. Only households who provided data for the relevant questions are included in the charts below.

The first chart shows the number of cars per household against the number of workers (aged 16+) per household.

Chart 1. Car numbers against worker numbers

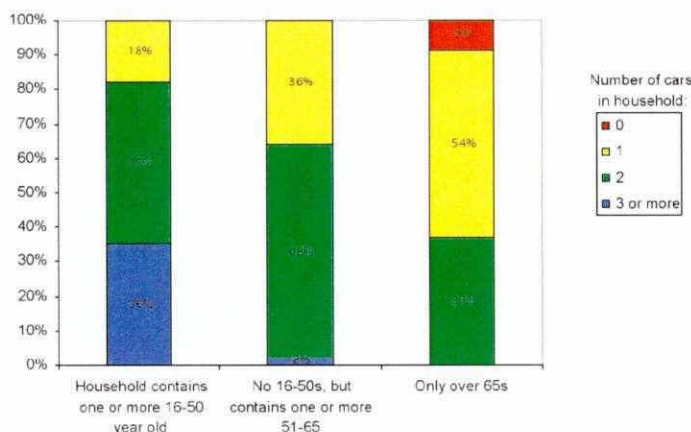


The second chart shows the number of cars per household against one of three age categories:

1. The household contains at least one person aged 16-50. (These households make up around half the households in the survey.)
2. The household does not contain anyone aged 16-50 (or younger) but does contain at least one 51-65 year old. (These households make up around a quarter of the households in the survey.)
3. The household only contains over 65-year-olds. (These households make up around a quarter of the households in the survey.)

The chart shows that on average, the number of cars owned by a household falls with increasing age of the youngest person in the household. (N.B. The number of people per household is not taken into account here).

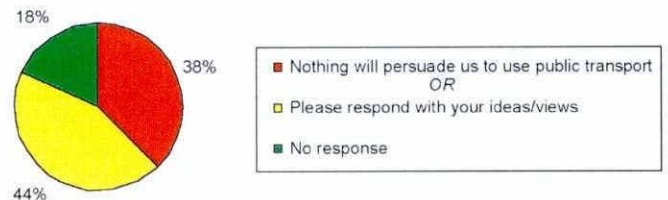
Chart 2. Car numbers against age categories (see above).



2h. Changing away from dependence on cars

If the car is currently your preferred transport, what would persuade you to make more use of public transport?

Respondents were asked either to tick the statement "Nothing will persuade use to use public transport" OR to write comments in a box headed "Please respond with your ideas/views". The results are shown in the pie chart below. 38% ticked the statement (with a couple adding "At present") while 44% wrote comments instead.



If the households who did not answer any of the questions in the page 2-3 spread are excluded (see note page 12), the percentage of those who ticked the statement rises from 38% to 40%.

Again excluding the households mentioned above, if the figures are looked at against the three age categories used on the previous page, the percentages for each group are as shown in the chart below, e.g. 44% of the households containing only over 65s ticked the statement. From these figures it appears that households containing 51-65 year olds but nobody younger than that are most receptive to using public transport in the future.

Household contains ...	% who ticked the statement "Nothing will persuade us to use public transport"
One or more 16-50 year old	42%
No 16-50s, but contains one or more 51-65	32%
Only over 65s	44%

Comments

The comments have been summarised and put into various categories on the following pages. The figures refer to the number (not the percentage) who made a particular comment.

Comments on how bus and rail services could each be improved are given on page 16, with the most common suggestion for both being increased frequency. All other comments are given on the following page, including those on bus/rail integration.

Would consider public transport if/when ...

- Unable to drive any more due to age/disability/ill health x 12
- Old x 3
- Retired
- Unable to afford car
- More time – so waiting less important
- Not associated with work/business

Public transport not suitable because ...

- Hours/location/nature of work x 8
- Disabled
- Would take too long to get anywhere. A hassle.
- Trips to shops easier by car as you often need to go to several different places (and quickly).
- Public transport lacks the convenience, availability and flexibility (go where you want, whatever the distance, when you want, with a load if necessary) of your own car.

Need to use car to make it pay

- Need a car so have to use it most of the time to make it pay.
- If I have gone to the expense of buying and insuring a car, why would I leave it in the garage and use public transport?

Cycling

- Safe cycle paths
- Proper separate cycle path

Park & ride

- Ring & Ride to connect with public transport hubs (e.g. Stroud, Gloucester bus & rail station).
- Links to park & ride (Gloucester).

Bus/rail integration

- Integrated bus/rail system x 4
- Change bus timetable so it arrives at station before train is due in, not 2 mins after it has left.
- Bus service to rail station to actually coincide with Glos trains.
- If buses from Ashmead to railway station dovetailed with train departures and arrivals.
- Need to regularly connect with the available train service and other main bus services. The present "Village Link" service does not.
- Rail services with bus links that do link and which go beyond centre of village.
- Could use train if efficient shuttle services connecting at each end of journey
- Bus links need to be timely & reliable.
- Might use rail service if bus linked passed house.

Other

- I have never seen more than 2 or 3 passengers on a public transport vehicle.
- Because there is no opportunity to downsize housing, that is why people who are older have to move away. Which also answers the question about transport: the hourly bus service fails because the people have already moved away.
- We would keep only one car and use public transport
- Dial a ride (door to door).
- Minibus type public transport is necessary in Coaley for those without private transport.



Comments continued: Improving train/bus services

Train	No.	Further details where given
More frequent/regular	11	<ul style="list-style-type: none"> Gloucester x 2; Bristol x 2; Stroud/Stonehouse
Cheaper fares	6	<ul style="list-style-type: none"> Cheaper to Bristol Twice the cost of using car
More reliable	3	<ul style="list-style-type: none"> To Bristol
Better hours	2	<ul style="list-style-type: none"> Times to suit shift patterns
More reliable connections	2	
Punctuality	1	
Information easier to find	1	
Wheelchair access	1	<ul style="list-style-type: none"> Cam & Dursley OK but problems at Gloucester on middle platform – no lift, only lots of stairs.
More secure parking at station	1	
Season tickets	1	<ul style="list-style-type: none"> More flexible/better value for Glos/Bristol
Other	4	<ul style="list-style-type: none"> Some 'express train' services to call at C&D Direct train to Cheltenham. Not poss. to get bus from station to Coaley without going to Dursley. Would probably use more for longer journeys

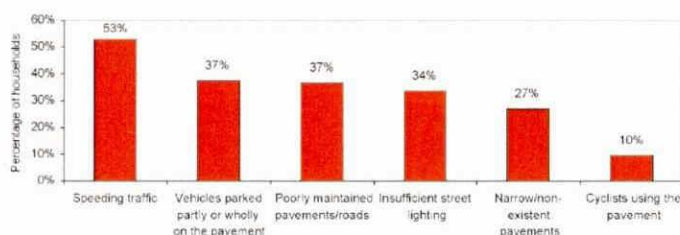
Bus	No.	Further details
[Specific journeys mentioned]	7	<ul style="list-style-type: none"> More services to Gloucester through village Direct to Gloucester and Stroud Regular service to Stroud on B4066 To Gloucester/Cribbs Causeway Cribbs Causeway from Slimbridge or Cam & Dursley To Aston Down (Minchinhampton) in time for work To Dursley and back at right times for work Direct bus to Cheltenham
Regular	7	<ul style="list-style-type: none"> Regular transport without having to ring ahead esp. mid am/pm
More reliable	6	
More frequent	3	<ul style="list-style-type: none"> More frequent to Dursley and Stroud.
Cheaper	3	
School times	2	<ul style="list-style-type: none"> Village Link bus leaves Dursley – 4pm. If left 15-20 mins later, children attending after-school clubs at Rednock could use this service to come home as most activities finish at 4pm and if they have been doing sport they then have to get changed. Could save car journeys. If Vill. Link tied in with Coaley school times would use it (tried but unreliable and let down several times).
Long way to bus stop	2	<ul style="list-style-type: none"> If I can't get picked up close to my door then I may as well take my car.
Wheelchair access	1	<ul style="list-style-type: none"> Wheelchair too heavy to lift on and off buses.
Lower floors for buggy access	1	
Re-nationalise	1	<ul style="list-style-type: none"> Renationalise buses and do away with operators who run obscure timetables that nobody uses.
More convenient	1	

Unspecified whether rail or bus		
More frequent/regular	16	<ul style="list-style-type: none"> Public transport in a rural area can never replace the need for a car. However, if it is reliable, and reasonably frequent and affordable, it can reduce the amount of car use. The frequency is the problem at present. 24 hours a day, 365 days a year Regular daily service Weekends
More reliable	7	
Cheaper	6	
Convenient	4	
Cleaner	3	
Flexible	3	<ul style="list-style-type: none"> Responsive to my needs
On time	2	
[Specific journeys mentioned]	2	<ul style="list-style-type: none"> Service to Stroud at times convenient to work Timetable to fit in with school times from Gloucester.
Timetable easier to understand	1	<ul style="list-style-type: none"> Make timetable easier to understand – times and routes.
No strike agreement	1	

2i. Village traffic (as a pedestrian)

From a pedestrian's point of view, which of the following are problems in Coaley? Please tick all appropriate boxes.

Over half the households think that speeding traffic is a problem for pedestrians in Coaley – this came top of the items listed in the question.



Some people commented on the items:

Speeding traffic

- Fast traffic around school
- Speed limits not kept to
- Very much a problem!
- Traffic calming through village would be useful esp. coming down hill past Fox and Hounds
- Whatever the result of this survey we do not need any traffic calming.

Vehicles parked partly or wholly on the pavement

- Westend
- On bends in road
- In road at night
- On side of road in main street.
- Heavy lorries deforming paths and kerbs by parking for deliveries.
- On road in lay-by by church, as road is difficult to judge at that point.
- Law breaking parking – facing oncoming traffic, parking in 'blind' spots.
- In front of school & church. Oncoming vehicles coming too fast on this part of road.
- Vehicles parked outside houses when they could be parked on drives. (Sometimes five cars and one or two vans parked in road, when four of those cars could be parked on drive.)

Poorly maintained pavements/roads

[Two people crossed out "pavements" and one crossed out "roads".]

- Recent repairs to the pavement caused me huge problems and prevented me walking anywhere with a double buggy.
- Some

Insufficient street lighting

- Hamshill area.
- I deplore the encroaching number of street lights in a rural environment.

Narrow/non-existent pavements

- What has been done on Hamshill – great!

Cyclists using the pavement

- The roads are too dangerous.
- Cyclists speeding down hill without lights or bells.

There was also an option "Other" where respondents were asked to specify other problems in Coaley. A summary is given below. The most common was vegetation e.g. overgrown hedges.

Issue	No.	Further details
Vegetation	6	<ul style="list-style-type: none"> • Overgrown hedges x 4 • Particularly at eye level x 1 • Overgrown trees – the Paddocks & the Close • Poorly cut hedges • Hedge trimmings left in path x 2 e.g. twigs with thorns left from school towards Westend
Skateboarding	4	<ul style="list-style-type: none"> • On pavements x 3 • On roads x 1 • Some appear to have no consideration for their own safety let alone anyone else's.
Dog fouling	3	<ul style="list-style-type: none"> • A major problem • Betworthy pavements around the green, and by elderly homes grass. Children have stepped in it numerous times.
Miscellaneous		<ul style="list-style-type: none"> • Horses • Mud left by farm vehicle across field access gates • Current state of entrance to village hall car park • Lack of gritting, lethal • The new pavement between Hamshill & Coaley is above grass level – both my 10 year old and I have had falls there!

A couple of people also made general comments:

- These questions assume that you live in the village where there are street lamps and pavements. Some of us live in the Parish without these facilities – and we do not want them either!
- What about "Village Traffic – as a cyclist"??

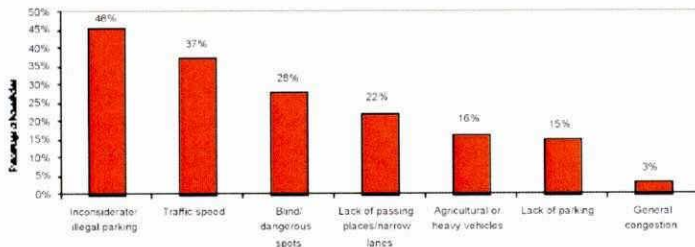
2j. Village traffic (as a driver)

From a driver's point of view, which of the following are problems in Coaley? Please tick all appropriate boxes.

46% of the households think that inconsiderate or illegal parking is a problem for drivers in Coaley – this came top of the items listed in the question, followed by traffic speed. Only 3% (7 households) thought that general congestion was a problem.

One person wrote, "Living in the country one expects all of the above" and another, "As a driver I haven't any problem – this after all is a rural village – let's keep it that way, and drive accordingly."

Comparing the chart below with that in 2i above, a higher percentage feel that speeding traffic is a problem for pedestrians (53%) than it is for drivers (37%).



Some people commented on the items listed in the question:

Inconsiderate/illegal parking

- Parking on road when driveway or parking space available x 2
- Vehicles parked facing wrong way at night.
- Cars left on roadside with no lights after dark.
- On/adjacent to bends.
- Too many outside school during day.
- Mums dropping children at school, bad parking & speeding.
- Outside row of cottages in village on a blind corner. Why can't they park in village hall car park? – there should be double lines outside the cottages.
- Parking on the road has a benefit as it slows traffic down.

Traffic speed

- In the narrow country lanes.
- Car and farm traffic cutting up verges.
- By school/village centre.
- By farm that leads onto A38.
- Top limit 30mph.
- Unnecessary 30mph speed limit.
- Narrow lanes are natural traffic calming, and look nice into the bargain. The wide straight road at Far Green is a race track.



Blind/dangerous spots

- Rosebush pub garden exit, The Close.
- Outside school.
- Due to inconsiderate parking.
- Sharp bends into Coaley, specially new one.
- Having to drive on the wrong side of the road on the approach to a blind bend – from pub towards Hamshill.
- Dangerous stretch with parked vehicles between the Fox and Betworthy Farm and just before bend at bottom of Hamshill.
- Left-hand bend approaching Hamshill should have a warning sign as this is often taken too far and resulting in cars on wrong side of road.
- Lack of road markings showing priority not maintained e.g. at Hyde Gate Kennels where Farfield traffic was instructed to give way to Coaley/Uley traffic. Line long gone and situation potentially dangerous.
- When roads are re-surfaced they become narrower and much more difficult to let others pass without going into a ditch.
- Acceptable in a village.

Lack of passing places/narrow lanes

- In Park Lane etc.
- Around Ham-Silver St.
- Especially round the Ham.
- Between peak lane and Horn Farm.
- Particularly local builders and tradesmen.
- If more tarmaced passing places were created in the narrow lanes e.g. Peak Lane, The Ham, there would be no need for vehicles to carve up the roadside verges.

Agricultural or heavy vehicles

- Particularly local builders and tradesmen.
- Filthy roads.
- Speeding.
- Acceptable in a village.

Lack of parking

- Cars on roads for football matches and big events at hall.
- Lack of sufficient parking at village hall and school.

General congestion

- Around narrow area at school.
- Too much traffic commuting to and from work etc.

2j continued

There was also an option “Other” where respondents were asked to specify other problems. A summary is given below. The most common was the condition of the roads.

Issue	No.	Further details
Condition of roads	6	<ul style="list-style-type: none"> Poor maintenance x 2 e.g. Coaley-Uley Road. Road surface – The Close
Dirt/debris in road	4	<ul style="list-style-type: none"> Farmers not sweeping after manure spreading & hedge trimming. Dirty roads left by agricultural vehicles. At times excess mud and muck on road. Hedge trimming left on carriageway and footpaths.
Horses	3	<ul style="list-style-type: none"> Especially the “invisible ones”. Using the narrow roads.
Lack of gritting	2	<ul style="list-style-type: none"> Lack of gritting, lethal. Slow response to gritting in bad weather.
Miscellaneous		<ul style="list-style-type: none"> Cyclists using narrow roads. Cut hedges of fields in lanes for more vision. House safety lights shining into the road. Roadworks.

2i & 2j combined

The table below combines the results of 2i and 2j. The top five have been highlighted in bold.

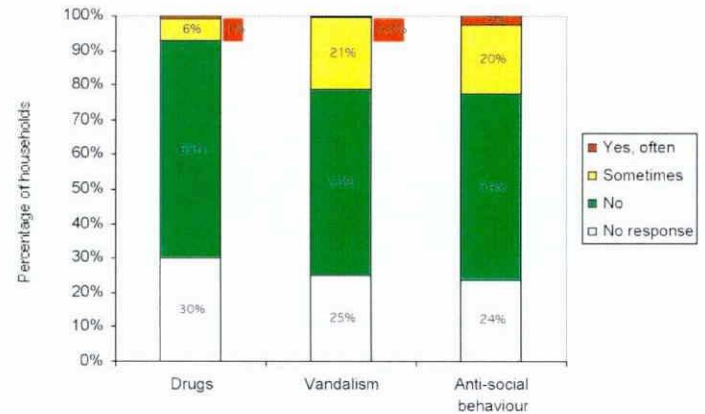
	As a pedestrian or as a driver?	Percentage of households
Speeding traffic	Pedestrian	53%
Inconsiderate/illegal parking	Driver	46%
Vehicles parked partly or wholly on the pavement	Pedestrian	37%
Poorly maintained pavements/roads	Pedestrian	37%
Traffic speed	Driver	37%
Insufficient street lighting	Pedestrian	34%
Blind/ dangerous spots	Driver	28%
Narrow/non-existent pavements	Pedestrian	27%
Lack of passing places/narrow lanes	Driver	22%
Agricultural or heavy vehicles	Driver	16%
Lack of parking	Driver	15%
Cyclists using the pavement	Pedestrian	10%
General congestion	Driver	3%

3a. Crime and vandalism

In your opinion, is crime and vandalism a problem in the area of the village where you live?

Most respondents do not think that the three items listed in the question are a problem where they live. The number of households who ticked each option are given in the table, with the chart below showing the percentages.

	Number of households			
	Yes, often	Sometimes	No	No response
Drugs	2	14	137	66
Vandalism	1	45	118	55
Anti-social behaviour	6	43	118	52



A few people made comments on the items listed:

Drugs

- Dealer cruises the area in a red car.
- At rear of village hall.

Vandalism

- Bus shelters.
- Graffiti.
- Graffiti and other mindless acts very dependent upon the current wave of young people passing through this stage of adolescence.
- Damage to vehicles.

Antisocial behaviour

- Litter x 3
- Fly tipping.
- Driving very close to my car from behind, from a lot of people from Coaley.
- House and car radios, car engine testing!

Other crime

There was also a space in the question for respondents to indicate if they thought any other crimes were a problem in their area.

The main problems listed by respondents were burglary, theft or break-in, which together were mentioned by 21 (10%) of the households; most indicated that they were “Sometimes” a problem.

	No.	Further details where given
Burglary have	11	<ul style="list-style-type: none"> • Attempted burglary last year in neighbourhood, not in, but police were seen running through our garden after 2 men. • Although not personally affected, neighbours been. • Worry about the 2 recent crimes in village – burglary and the attack on the lady in the close. • Occasional burglaries throughout village • Threat of burglary • Trespassing and potential burglaries
Theft	8	<ul style="list-style-type: none"> • Bike stolen • Robbery/car theft • Petty theft has been a problem in the past (garden ornament)
Break-in	3	<ul style="list-style-type: none"> • Break in attempt to shop [This person ticked “Yes, often”] • No experience of it but others have had break-ins.
Speeding	3	<ul style="list-style-type: none"> • Peak Lane • ‘Young drivers’ • Fast inconsiderate driving in a narrow lane.
Parking	1	<ul style="list-style-type: none"> • Parking on pavements.
Air weapons	1	<ul style="list-style-type: none"> • Illegal use of air weapons.

Some positive comments were also given:

- No problems generally, used to be but Police sorted car thieves out.
- “Suspicious characters” have been seen locally, but generally crime has been prevented.
- Coaley is a relatively safe place!
- Since living in Coaley we have never come across any of these problems.

3b. Crime prevention and Neighbourhood Watch

Do you know who your neighbourhood watch representative is?

7 in 10 of the households know who their neighbourhood watch representative is. One of those who ticked No added “but assume it is Sherriff Wibberley”.

	Percentage of households
Yes	70%
No	28%
No response	1%

3c. Neighbourhood Watch participation

Do you or members of your household use the neighbourhood watch network?

A third of the households use the neighbourhood watch network.

	Percentage of households
Yes	33%
No	63%
No response	4%

A few added comments to their response:

Yes

- I report any incident but would like neighbourhood watch scheme signs at Hamshill and perhaps a village get together for those prepared to keep watch (some advice/training from police on what to do).

No

- What is this?
- How do you?
- Not yet but think it good.
- But we do report suspicious characters hanging about to the police.
- Only informally as neighbours.

3d. Police presence

Previous surveys have requested that the police provide more physical presence. In your opinion, has this presence been provided?

Around a quarter of households think that this presence has been provided and around two thirds do not.

	Percentage of households
Yes	24%
No	68%
Other response*	2%
No response	6%

* Other responses: Not in our area; Not aware; Never see police at village other than mobile box; Do see the mobile police station occasionally.

Other comments are listed below:

Yes

- But not enough
- Although having regular policing on a daily basis would be ideal.
- MPS very useful means of satisfying this need.

No

- In parish? You're joking!
- More response from Dursley Police Station would be better.
- Need more drive through patrols.
- Van does nothing. Far better to have random patrols on foot and in car.
- Other than organised visits per 3e.

3E. MOBILE POLICE STATION

A mobile police station visits the village regularly. Do you or any other members of your household ever make use of its facilities, help and advice?

40 households ticked Yes. This represents just under a fifth of the 219 households.

	Percentage of households
Yes	18%
No	81%
No response	0.5%

Comments are given below:

Yes

- Occasionally.
- But would rather have someone 'on the beat' more regularly.
- Yes but stated the totally obvious. No depth of knowledge at all.
- MPS very useful means of satisfying the need for police presence.

No

- Not yet!
- Not yet – but like to know it's there if needed.
- We have never had need to.
- We work on weekdays.
- A waste of public money and time!
- Never seen it! In years gone by a policeman would walk around the parish from his house in CAM and talk to the parishioners.

4a. Use of recycling

Do you and your household use the kerbside collection (local authority) or village hall recycling services?

94% use the kerbside collection, with one person adding "Sometimes."

66% (around two thirds) use the village hall recycling facilities. One added: "A waste of public money. Numbers using this service need to be analysed. This comment refers only to the shredding service provided."

All but one of the households use at least one of these services (64% use both), and the household who does not use one of the two services listed takes their recyclable waste to a local supermarket.

	Percentage of households	
	Kerbside Collection	Village Hall Recycling
Yes	94%	66%
No	4%	11%
No response	2%	23%

4b. More Recycling

If the recycling was extended to more items (e.g. cardboard, polystyrene, garden refuse) would your household make more use of the facility?

Of all 219 households, 85% said they would make more use of the kerbside recycling facility if it was extended as described and 66% would make more use of the village hall recycling site.

Looking only at those who do not currently use the facilities, just over a third would make more use of it if extended, bringing the potential total from 94% to 96%. Similarly, just under a third of those who do not currently use the village hall recycling facilities would use them more if extended, increasing usage from 66% to 76%.

Comments are given below:

Kerbside recycling

- Cardboard
- With provision of specific bags

Village hall site recycling

No

- If I put it in the car I may as well go to the tip.
- Too dangerous, blind spot for cars to come out of.

Yes

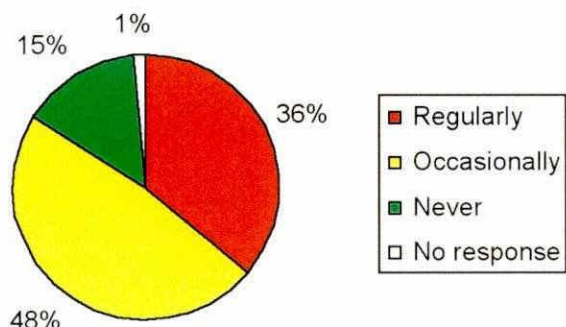
- Cardboard.
- Clothes bank would be useful.
- Absolutely.
- How about community composting site on the waste area at the rear of the Parish Council car park? Or will this area be used for young people's activities – compost heap could go in the churchyard.



5a. Use of public footpaths and bridleways

Do any members of your household use public footpaths and/or bridleways around the village and to neighbouring parishes?

Most households (84%) use the footpaths/bridleways at least occasionally, with over a third using them regularly.



5b. Maintenance of Public Footpaths and Bridleways

If you or members of your household use the footpaths and bridleways, in your experience, are they well maintained and clearly marked?

Just over half of all the households think the footpaths and bridleways are well maintained and just under half that they are clearly marked. However, not all the households use the footpaths/ bridleways (see 5a above) which may explain why some do not have an opinion. Of those who

	Percentage of all 219 households		Percentage of households who expressed an opinion	
	Well maintained	Clearly marked	Well maintained	Clearly marked
Yes	52%	48%	65%	63%
No	25%	28%	31%	36%
Other response*	3%	1%	3%	1%
No response	20%	23%	-	-

*Other responses:

Re Well maintained

- Varies/variable x 2
- Fairly well
- Adequate but not outstanding
- Some farmers still block footpaths
- Sorry can't give black and white answer. Most are well maintained and clearly marked but accessibility varies with the season.

Re Clearly marked

- Not always. We know them without looking for way marks.
- Variable.

expressed an opinion, 65% think they are well maintained and 63% that they are clearly marked; the percentages of those who disagree also increase when the calculation takes into account only those who expressed an opinion. A number of households made comments. These are given below, under the answer ticked.

Well maintained

No

- Appalling lack of attention given to PROW – appoint a footpaths warden e.g. Dr Gamman. 'Use It or Lose It' slogan.
- Farmers plough up paths across their fields. Access to path opposite The Elms is terrible – large areas of stagnant water and dumped rubble.
- Some but not all.
- Stiles fine but very few gates “hang” properly. Often impossible to do on horseback and some difficult to do on foot e.g. hinges have dropped, so gate has to be lifted to unlatch/latch. Sometimes no latch or bolt which means chains need to be undone/done up. There are latches on the market designed to be opened on horseback (gates still need to hang properly though!)
- Styles are broken and dangerous. Footbridges are sometimes decaying and dangerous.
- Tied gates or gates that don't open where there are footpaths.

Yes

- But some landowners are better than others.
- Do it ourselves!
- Generally
- Mainly
- Pretty reasonable condition
- This applies to about 80% of paths but not all and not at all times of the year.

Clearly marked

No

- Not all of them.
- Not bridleways.
- Not always.
- Marked from road clearly, but then signs unclear or missing.
- Although not clearly marked, it's not usually difficult to find your way between stiles if you have a map.

Yes

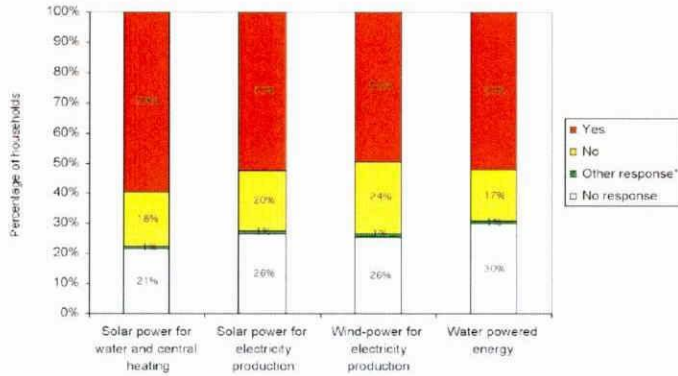
- But some landowners are better than others.
- Mainly.
- Generally.
- Generally. Unfortunately stiles are not “dog friendly”. Along the South West Peninsula Coast Path most stiles are dog-friendly, that is you can lift a vertical wooden block to let your dog pass under the stile. Locally most stiles have galvanised wire fencing down to ground level, which only a dachshund could pass through!

5c. Energy and the environment

Would your household be willing to use a scheme to harness renewable sources of energy on a domestic or small community scale in Coaley?

(N.B. The wind-powered generator at Nympsfield is on a commercial scale.)

At least half the respondents ticked yes for each of the schemes listed.



* "Dependent on costs and siting"; "Household would be interested in more information e.g. cost and methods".

A few households made comments:

Yes

- Dependent upon the cost.
- Not enough information.
- Really need more information on what you have in mind.
- Would consider all these if available.
- All if the technology existed.
- Decentralised energy systems are possible the future!

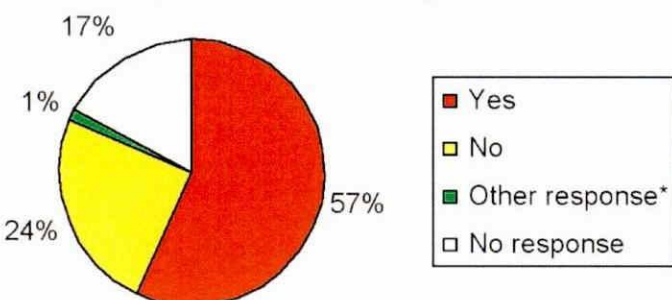
No

- I have enquired into Solar Power – it is too expensive to install. You need 20-30 years to break even – best to install during construction of a new property!
- Insufficient resources available.
- Biomass heat and power much more appropriate than solar electricity or wind.
- Listed building status stupidly prevents.
- Unable as building listed.

6a. Village Hall

Do you and your household consider that the village hall should be expanded to incorporate and integrate other facilities?

Over half the households consider that the village hall should be expanded. Comments are given below.



*Other response

- Each case would require separate consideration
- What do you have in mind?
- Yes – If village gets a lot bigger; No – for village of present size.

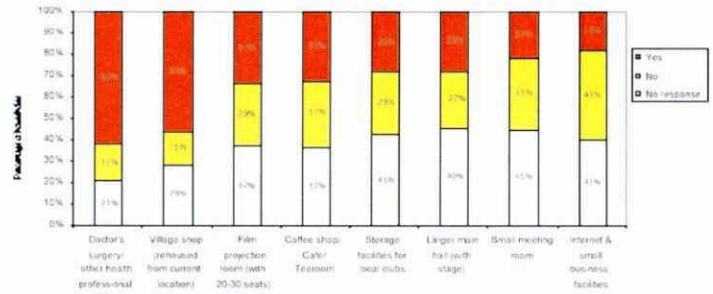
Yes

- If needed
- Possibly
- Needs updating, esp. roof

6b. Village hall expansion

If the facilities below were incorporated into an expanded village hall, would your household make use of them?

The results are shown below. The two most popular facilities were a doctor's surgery (62%) and village shop (56%). The least popular were Internet and small business facilities.



Comments are given below:

Village shop (re-housed from current location)

- Maybe if the village shop booms, rehousing it to the Village Hall may be a good idea.

[I couldn't read the writing very well so I may have got this comment wrong.]

Film projection room

- Cinema club in conjunction with film projection room
- For big room

Café/Coffee shop/Tea room

- Café/fast food during early evening

Larger main hall (with stage)

- If necessary – does it need to be larger??
- Adequate as is

Small meeting room

- We already have 2

Internet and small business facilities

- Parish Council offices

Respondents were also invited to give other ideas. These, and other comments made, are shown on the following page.

Suggestions

Changing rooms

- Better changing rooms x 3
- Changing facilities for football teams.
- More adequate changing facilities for outdoor sports.

Sports

- Sports facilities.
- Better/higher badminton court.
- Better sports facilities, exercise machines etc.
- Permanent “games room” e.g. pool table, table football, table tennis.
- Facilities for indoor sports such as 5 a side football, cricket nets, full size snooker table.

Young people

- Purpose built/exclusive room for youth group.
- A room specifically for Coaley Youth Group available as a drop in centre.

Showers

- Better showers.
- Shower facilities for football teams.

Licensed club/bar

- Licensed club.
- Licensed club room & bar.

Toilets

- Better toilets.
- Toilets for Jubilee Room.

Rebuild

- Rebuild the village hall from scratch.
- Current hall and shop are eyesores. Better purpose built (second) facility.
- Renew village hall. Larger premises to incorporate shop and toilets. Knock down and renew hall to incorporate shop and sports facilities.

Other ideas

- Kitchen for Jubilee Room.
- Perhaps classes (WEA etc.) could run in some rooms. Music lessons/keep fit/T'ai Chi/rent out for parties.
- Existing hall facilities need updating and more financial support.

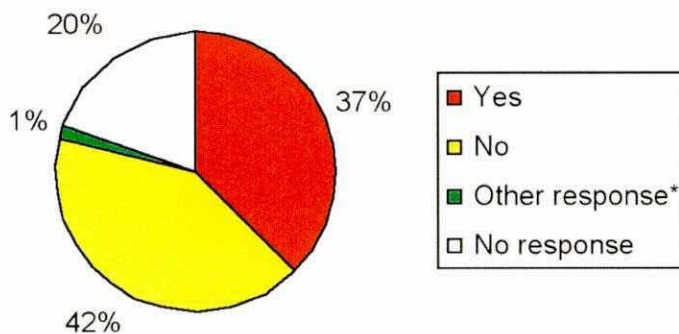
Other comments

- There isn't enough funding to keep the hall in proper order now!! Where is the money coming from for all these big ideas??
- Are our parishioners prepared to fund these, or will they be looking for taxpayers' money/grants?
- I think you may lose the close knit feeling of the village if you go too big.
- Village Hall is adequate for most functions already.

6c. Involvement in the Village Hall

If your household would like to see the village hall expanded, would you be prepared to help make this happen.

37% of households said yes.



***Other responses**

- Depends on current commitments.
- If village is much bigger I would rather not.
- Would support possible fund-raising activities.

Yes

- Time permitting

No

- Would be willing to help financially but do not have spare time to help “hands on.”
- Unfortunately time does not permit me to at present.
- But then don't consider village hall expansion a priority.



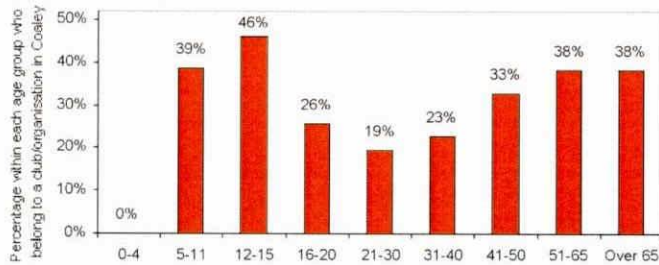
7a. Leisure activities

Do any members of your household belong to any clubs or organisations, whether run in or outside the village?

34% of the 589 household members belong to a club/organisation in Coaley and 35% belong to one outside Coaley. (The figures below add to more than 100 because 14% belong to clubs both within and outside the parish.)

	Percentage of household members
Yes, within Coaley	34%
Yes, outside Coaley	35%
No, not at all	29%
No response	16%

The chart below shows the percentages within each age group who belong to a club or organisation within Coaley. For example, 46% of the 12-15 year olds belong to club/organisation in the parish compared with 19% of 21-30 year olds.



7b. Clubs in Coaley

Do any members of your household belong to the following clubs or organisations in Coaley? Please write in the number of members of your household who belong.

The groups have been listed in the table below, in descending order of the number of households containing people who attend them. Top of the list is Coaley Shop and Post Office Association, with the W.I. and Friends of Coaley Church in second and third place.

Organisation (Coaley)	Contact*	No. households	% households	No. people	% people
Shop and Post Office Association	Dudley George	62	28%	104	18%
Women's Institute	Jenny Sims	30	14%	31	5%
Friends of Coaley Church	Margaret Lewis	28	13%	49	8%
Wives Fellowship	Barbara Prout	21	10%	22	4%
Tennis and Recreation Club	Barbara Tong	19	9%	54	9%
Lunch Club	Lesley Chalmers	18	8%	27	5%
Produce Show	Helen Wilcox	17	8%	22	4%
Amateur Dramatics Society (CADS)	Mo Green	16	7%	25	4%
Cricket Club	Bryan Chivers	15	7%	20	3%
Parochial Church Council	Francis Gamman	13	6%	15	3%
Friends of Coaley School	Fiona Porter	12	5%	19	3%
Short Mat Bowls Club	Maureen Wibberley	11	5%	16	3%
Gardening Club	Fran Rees	12	5%	13	2%
Ramblers	Rob Tucker	9	4%	17	3%
Art Club	Mandy Troxler	9	4%	10	2%
Parish Plan Group	Bob Hallam	8	4%	10	2%
Friendship Club	Mollie Tainton	8	4%	9	2%
Coaley Crew	Fran Paul	6	3%	9	2%
Brownies	Anne Gilbert	7	3%	7	1%
Village Hall Management C'ttee	Mo Green	6	3%	7	1%
Parish Council	Heather Targett	6	3%	6	1%
Playgroup	Sarah Randall	6	3%	6	1%
Guys and Dolls Skittles Team	Bob Coleman	4	2%	6	1%
Shuttlecocks	Hedley Dowler	4	2%	6	1%
Reading Group	Diana McDowell	4	2%	5	1%
The D.B. Skittles Team	Shirley Ellis	4	2%	5	1%
French Club	Chris Purnell	4	2%	4	1%
Bellringers	Terry Chiver	3	1%	4	1%
Moles Skittles Club	John Carter	2	1%	3	1%
Crows Band	Colin Dickinson	2	1%	2	0.3%
Rovers Association Football Club	George Malfiggiani	1	0.5%	2	0.3%

(The same list, arranged alphabetically, is given in the appendix.)

A few respondents mentioned other groups:

- Foxy Ladies Skittles Team x 2
- 2 Coaley Conservatives
- St. Bartholemews Church? Whatever happened to Christian Worship?
- Coaley Church Social Committee
- What about keep fit?

Other comments

- Didn't know there were so many organisations! Would be interested in finding out more about some. Are group contacts/tel nos widely publicised?
- Didn't know some of these existed – a useful list! More info in Parish magazine could be helpful.

7c. Organisations outside Coaley

Please list any clubs and organisations which anyone in your household belongs to which do NOT exist within Coaley.

48% of the households answered this question, naming one or more groups they belong to outside Coaley. The results are summarised below, in descending order of household numbers (and within that, alphabetically). The top three are gym/keep fit, skittles and sailing club.

Club or organisation	No.	Location where specified	7d (see p36)
Gym / keep fit / health & fitness	11	Dursley x 4; Stroud x 2; Stinchcombe x 2	Y (6)
Skittles	9	Eastington x 3; Berkeley x 2; Cam; Wotton; Frocester	Y (4)
Sailing Club	8	Frampton x 5; South Cerney; Cirencester; Oxford	Y (3)
Golf Club	6	Stinchcombe x 3; Wotton x 2	Y (6)
Cricket Club	5	Frocester & Stone; Frocester; Glos County, Bristol	Y (3)
Guides	5	Cam x 3; Stinchcombe; Uley	Y (5)
Swimming / Swimming Club	5	Dursley x 2; Stroud x 2; Gloucester	Y (2)
Rugby Football Club	4	Dursley x 2; Thornbury	Y (2)
Angling Club	3	Bath & Bristol; Frampton; Gloucester	Y (3)
Football Club	3	Eastington; Nailsworth	
Riding Club	3	Frampton x 2; Berkeley & district	Y (1)
Scouts	3	Slimbridge x 2; Malvern	Y (2)
Youth Football	3	Slimbridge; Dursley; Wandswell under 11s – Berkeley	Y (3)
Aerobics	2	Gloucester; Dursley	Y (2)
Art Club	2	Rednock & London; Daytime art – Wotton & Cam	Y (1)
Bird Watching & Preservation Society	2	Dursley	Y (2)
Choir	2	Dursley; Community Choir – Stroud	
Conservative Club	2	Dursley	Y (1)
Dursley & Cam Society	2	Dursley	Y (2)
Friends of Westonbirt	2	Westonbirt	Y (1)
Gliding Club	2	Nymphsfield; Aston Down	
Indoor Bowls Club	2	Stroud	Y (1)
Line Dancing	2	Cam; Thornbury & Berkeley	Y (2)
Motorcycle Club	2	Minchinhampton; Gloucester & Bristol	Y (2)
Pony Club	2	Berkeley area	
Rotary	2	Wotton under Edge x 2	
Squash	2	Dursley; Rednock	
Yoga	2	Nymphsfield; Dursley	Y (2)
Young Farmers	2	Gloucester; Dursley	Y (2)
Youth orchestra	2	Gloucester; Stroud	
Archery Club	1	Dursley	Y
Army Cadet	1	Dursley	Y
Arthritis Care	1	Stroud	
Badminton	1	Dursley	Y
Beavers	1	Stonehouse	Y
British Energy Chess Club	1	Gloucester	
British Legion	1	Stonehouse	Y
Brownies/guides	1	Dursley	Y
Caravan Club	1	East Grinstead	
Chamber of Trade	1	Dursley	
Christian teaching, Bible Truth	1	Innsworth	Y
CLA	1	London	
Climbing	1	Glos	
Congregational House Groups	1	Dursley	
Craft & Flower Arranging Group	1	Gloucester	Y
Crib Team	1	Berkeley	Y
Dyslexia Association	1	Gloucester	Y

Club or organisation	No.	Location where specified	7d (see p36)
Everyman Youth Theatre	1	Cheltenham	
Farm Women's Club	1	Wilts & Glos	
Fine Arts Society	1	Painswick	
Five valleys orchestra (youth)	1	Stroud	
Flat green outdoor	1	Cam	Y
Folk at Frampton	1	Frampton	Y
G.S.I.A.	1	Countywide	Y
GL1 Leisure Centre	1	Gloucester	
Gloucestershire Federation of WIs	1	Frocester	
Golden Valley Classic Motorcycle Club	1	Hunters Hall	Y
GRF&GS	1	Gloucester	
Gwent Schoolboy trails club	1	East South Wales	Y
Hampshire Mills Group	1	Hants	
Here to Help	1	Cam	Y
Institute of Advanced Motorists	1	Bristol	Y
Jazz orchestra (youth)	1	Stroud	
Kick boxing	1	Reading	Y
Kings Own Border Regimental Association	1	Carlisle	Y
Kung Fu Club	1		
Ladies Circle	1	Wotton under Edge	Y
Layhill Prison Club	1	HMP Layhill	Y
League of Friends	1	Berkeley Hospital	Y
Leisure Club	1	Dursley	Y
Male Voice Choir	1	Dursley	
Martial Arts	1	Dursley	Y
Monthly Coffee morning	1	Cam	
Mountaineering Club	1	Gloucester	Y
Music Society	1	Painswick	
Nadfas	1	Painswick	Y
National Trust	1		
Nature Watch	1	North Nibley	Y
NFU	1	Wotton under Edge	
Nuclear sports & social club	1	Berkeley	
OAP Friendship Club	1	Wotton	
Old Spot Book Group	1	Dursley	
Orchestra	1	Bristol	
Own church group	1	Gloucester	
Photographic darkroom	1	Gloucester	Y
Photographic Society	1	Bristol	Y
Pilates	1	Gloucester/Stroud	Y
Poetry group	1	Stroud (U3A)	Y
Prema	1	Uley	Y
Radio society	1	Stroud	Y
RAF Sailing Association	1	Hamble	
RAFA	1	Slimbridge	Y
Rainbows	1	Stroud	
Rambling Club	1	Dursley	
RBL	1	Slimbrige	Y
Reading Group (informal only)	1	Local but varies	Y
RHA	1	Bristol	Y
RHI	1	London	
Road Club	1	Dursley	Y
Round Table	1	Dursley	Y
Royal Academy of Arts	1	London	
Rugby	1	Gloucestershire	Y
Running Club	1	Dursley	Y

Club or organisation	No.	Location where specified	7d (see p36)
Severn Vale Smallholders	1	Thornbury	Y
Sewing Group (informal only)	1	Local but varies	Y
Slimming	1	Tuffley	Y
Snooker Club	1	Berkeley Power Station	Y
Southwest Potters Association	1	Wales	Y
St Georges Church	1	Cam	
Stamp Clubs	1	London/Thornbury	Y
Support Group for Cotswold Care Hospice	1	Dursley	
Swift Owners Club	1	National	
Tangent	1	Members' homes	
Tap Dancing	1	Quedgeley	Y
The Abdicators	1	Eastington	
Time Out	1	Cam	
Tyndale Choral Society	1	Dursley	
U3A	1	Stroud	
United Reformed Church	1	Sharpness	Y
Warhammer Club	1	Rednock	
Wildlife/Geology Conservation Groups	1	Stroud/Brockworth	Y
Wine Tasting	1	Stroud	Y
Wings & Wheels (Rednock)	1	Dursley	
Writing group	1	Cheltenham	Y
Youth Rugby	1	Dursley	Y

7d. New organisations in Coaley

If any of the clubs from 7c existed in Coaley, would you attend them?

Of the 106 households who answered question 7c above, nearly 60% would attend the clubs if they existed in Coaley. See 4th column of table on p34/35 for details of the clubs/organisations named by respondents in 7c who then said “Yes” in question 7d. The figures in brackets related to household numbers.

	Percentage of 106 households
Yes	58%
Other response*	2%
No	21%
No response	20%

*Other responses:

- Possibly
- The above in 7c cover the Coaley area

Comments

Yes

- If events held in Coaley [Re Dursley & Cam Society/Prema-Uley]
- Possibly – obviously loyal to team! [Re Youth Football Club-Dursley]
- But there isn't enough water! [Re Sailing Club]

Other comments

- Would like social club with dominoes etc.
- Junior sections of sports clubs to involve youth.

8a. Your family and Coaley school

If your children are of the appropriate age, do they attend Coaley School?

14 households have one or more child aged 0-4 and 22 households one or more aged 5-11. Some households have children in both age groups, and the total number of households with one or more child aged 0-11 is 31. Not all the 0-11 year olds will be eligible for Coaley school i.e. too young or at secondary school.

16 households have one or more child at either the preschool, infant or primary divisions of Coaley School, with a total of 25 children attending from these 16 households. The split by preschool, infant and primary is shown in the table below.

	Number of households			
	Any division	Preschool	Infant	Primary
No. households	16	3	5	11
Total no. children	25	4	6	15

The following answers were received from other households with children aged 0-11:

- No (Written under both infant and primary. Children: 1 x 0-4, 1 x 5-11)
- No – Wycliffe (Written alongside answer grid. Children: 1 x 0-4, 1 x 5-11)
- 2 will be attending (Written at top of question. Children: 2 x 0-4)
- No x 3 households (Written alongside answer grid. Children: 5-11 in each case)

8c – Lifelong Learning

A suggestion raised at the Parish Plan inaugural meeting was that education should be available throughout life in Coaley. (This could be either formally or informally taught.) If appropriate courses were available to suit your interests, do you think members of your household would attend?

51% would be interested in lifelong learning.

	Percentage of households
Yes	51%
No	30%
No response	20%

Comments

Yes

- If time was available
- Perhaps informal presentations to try and make parishioners more aware of issues and difficulties that face society.

No

- Facilities already exist at Cam & Dursley, only a short distance from Coaley. Is there really a need for this locally, I think not.

8d – Subjects to study

If the answer to 8c is YES, what subjects would your household like to see taught?

44% of the households answered this question, i.e. most of those who answered yes to 8c above.

- A wider understanding of sustainability e.g. where does our water come from?, where does our sewage go?, where does our energy come from?, where does our food come from?, what is a sustainable future?, what about local employment for parishioners?
- Any subjects which might add to useful learning. A variety of subjects plus specific ones if there was enough demand!

Computers/I.T. was by far the most common type of course mentioned: 39 households; 18%. A few people elaborated e.g. For beginners; For the mature person; Microsoft Word; Databases; Internet x 3; Website design x 2; Evenings.

Other courses/classes mentioned are given below on the following page, grouped by subject. Aside from computer courses, languages, local history and art were some of the more common choices. The figures refer to the number, not the percentage, of households.

I.T. x 39 – see above for details

Languages

- Languages x 16
- Languages other than French x 2
- French x 6
- Italian x 5
- Spanish x 3
- German x 2
- Swedish

Art/Crafts

- Art x 10 (e.g. for beginners; fine art)
- Crafts x 4
- Flower Arranging
- Photography x 6 (e.g. digital)
- Pottery x 2
- Quilling
- Textiles
- Mosaics

Health & fitness

- Yoga x 5 (e.g. for adults & children)
- Keep fit x 2 (e.g. for adults & children)
- Exercise
- Tai Chi
- Herbalism

Useful skills (apart from DIY etc.)

- Car maintenance/mechanics x 4
- First Aid x 2
- Book Keeping
- Key Skills
- Cooking (e.g. Cooking on a budget (students etc.) x 6
- Gardening (RHS)
- Landscape gardening
- Dog training Literature
- Self-defence classes for the youngsters

Learning music

- Piano
- Basic music reading
- Guitar
- Musical instrument

History etc.

- Local History x 10
- Family history
- History x 5
- History of Art x 4
- Informal history day classes
- Origins of place names
- Industrial archaeology

Useful skills for the home

- DIY x 4
- Woodwork x 4
- Upholstery x 3
- Plumbing x 2
- Building skills
- Furniture Restoration

The natural world

- Geology (e.g. local) x 4
- Astronomy x 2
- Geography (e.g. local/in day) x 2
- Local Archaeology with field trips
- Wildlife Watch
- Natural History
- Countryside Matters/interests
- Local environment

Performing arts

- Ballroom dancing
- Children's drama
- Choral (secular) music
- Dance
- Music

Literature

- English
- Literature
- Poetry and writing group

Additional comments

A few people added comments at the end of the survey or on the covering letter. These are listed in full below.

- Maybe in future this questionnaire could be carried out not so close to Christmas.
- Living on the outskirts of the parish we feel unable to provide an answer to some questions. Regarding housing, we feel villages should not expand where there is no local employment.
- How can you have a village plan if the basic requirements of energy, food, water and sewage are not appreciated? Do people understand the future for energy supplies? What is a decentralised energy system? Decentralised energy is being promoted as the future for energy supply. Where should our energy come from? Where should our water come from? At present it is imported. Where should our sewage go – perhaps back on the land. Is this a Parish Plan? – Most of it refers to the village! The village is only part of the parish!
- We have an excellent man in the village, Mr O. Goring, whose brains could be 'picked' regarding Wind Power, Water Power etc. He has a large pond that could be used for water power. (Even a simple thing like street lights). No doubt he has a dozen other suggestions.
- [This was written on the covering letter]: Sorry. If you don't like village way of living, why did you come here in the first place? Please leave it as it is. It is a very different way than towns.

Appendix 2

Distribution and collection of questionnaires

Name	Ward	No. of houses	Total delivered	Total collected	Return rate
	Coaley Peak	6			
	Garter Court	5			
	Haw Street	5			
	Silver Street	9			
	The Ham	9			
David Chapman	Total	34	34	20	59%
	Far Green	24			
	Knapp Lane	11			
	Ticks Hill	10			
	Uley	1			
Tylan Bahcheli	Total	46	46	23	50%
	Hams Hill	28			
	Field Lane	2			
	Trenley Road	9			
Tony Eve	Total	39	39	22	56%
Dudley George	Betworthy	28	28	19	68%
Gordon and Isobel Farmer	The Close	47	47	30	64%
	Bristol Road	2			
	Coaley	16			
	Corner Lane	4			
	Elmcote Lane	7			
	Pinnells End Lane	1			
	West End	17			
Colin Dickinson	Total	47	47	39	83%
	The Street	42			
	Victoria Street	2			
Patrick Roe	Total	44	44	32	73%
Community Shop*			-	35	-
GRAND TOTAL			285	220	77%

*Community Shop – the breakdown of questionnaires handed in at the shop were:

From the centre of the village	10
Close to the centre of the village	7
Outlying area of the village	17
Not known	1
Total	35